

Boat History

Vintage Model Works specialises in renovation and construction of model aircraft and boats of the 1940s, 1950s & 1960s.

Classic designs by Veron, Maycraft, Aerokits, Frog, Adamcraft and Modelmaker are brought back to life.

The following photographs show some of the models restored by VMW in recent years.



"Marlin" Cabin Cruiser

Constructed in 1956 renovated in 2003, length 72" with a beam of 20". This model is powered by a modified Anzani 23cc outboard motor seen here sailing on the River Thames at Laleham.



Marlin under power





The Marlin is over 50 years old and is scratch built and of wood and ply construction, a one-off model.

The size of the "Marlin" is seen in this photograph



Marlin under power on the River Thames



Marlin under power

Perormance is realistic because of its large size and sound.



Marlin



A photograph showing the Marlin engine (actually a modified two-stroke British Anzani outboard motor) fitted with a clutch and electric pump for water-cooling the cylinder head. Two persons are required to lift the model because of its heavy weight.



Marlin engine detail



M.S. Northern Star

M.S. Northern Star Customs Launch, 54 inches length and 15 inches beam, based on a Bolsons design (Poole boatbuilder now defunct). Introduced in 1956 by the Keelbuild Model Aero Works of Newcastle.



MS Northern Star



Model Shop

This example was renovated by VMW modellers in 1998. The model was found in a junk shop in Dorset complete with a Taycol "Super Marine" electric motor. This has since been replaced with a "Double Special" and is in use in the model (probably the only one still used).



Taycol Motors

This photograph shows the larger Taycol Double Special (centre) compared to the smaller Supermarine and Meteor motors.



Original advert for the Northern Star

At 54 inches in length this was the largest production kit available in 1956, an extremely capacious hull making it suitable for bulky early radio control equipment and batteries.

Above: 'Northern Star': This photo was taken during trials and in consequence the model is not completed and does not show Nav. Lights, Radar Scanner, Window frames and Fittings, etc.
Below: The author testing equipment in his workshop. He is fortunate in having a warm, spacious and well-equipped workshop, which has taken many years of improvement and cool accumulation to bring to this happy state.



Testing radio equipment installed in the Northern Star

Photograph showing the huge area available for early radio control equipment and was essential for batteries and valve receivers. The model parts were all pre-cut plywood and with eggbox construction skinned with 1.5mm ply.

THE FAMOUS 'TAYCOL' MOTORS

6 to 12 Volt Electric Motors for Model Boats, Railways Cars, etc.

IDEAL FOR ALL TYPES OF MODEL BOATS

Taycol Motors cover the whole Power range, from 1 amp to 5 amps. Their efficiency is so high that they will run satisfactorily from Dry Batteries, especially the Lantern-type.

THE 'SUPERMARINE' MOTOR

The most powerful and efficient Electric Motor obtainable for Motor Boats. Recommended for Boats of 36" length and upwards.

Specification Weight 2 lbs. 3 ozs.
Current Consumption (approx.) At 6 volts:- 1 amp at 4,800 r.p.m. (running free) 2 amps at 1,300 r.p.m. (max. efficiency).
At 12 volts:- 4 amps at 1,300 r.p.m. max. Power 35 H.P.
Exceptionally High Efficiency and Power.
Does not overheat at normal loads.

Size 2 1/2 x 4 x 6 in.

SUPER MARINE SPECIAL

The "Supermarine Special" has the same electrical and other characteristics and dimensions as the "Supermarine". The essential difference is in the modified terminal arrangement by which radio or remote control may be operated through a single pole change-over switch or relay, instead of the double-pole.

THE "DOUBLE SPECIAL"

1/16 hp. at 6,000 r.p.m., 2 amps.

4 x 4-in.
2 1/2-in.

Weight 2 lbs. 3 ozs.

Does not overheat at normal loads.

Requires only SINGLE POLE Change over switch or relay for reversing.

Constructionally, the "Double Special" follows the Supermarine layout and the overall dimensions and general appearance are similar.

The "Double Special" is a revised design in which exceptional performance is realized on 12 volt operation. Coupled with an acceleration (a maximum capacity of 3 amper-hour The Varley V.P.T. 79 is suggested) it provides a true high speed electric power unit.

Taycol electric motors

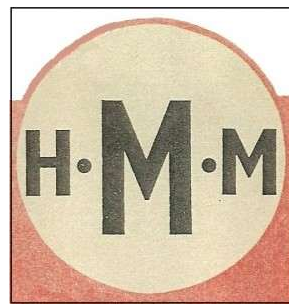
Copy of original magazine advert from the 1950s featuring the Taycol "double special" electric motor which powers the Northern

Star.



Wavemaster

After lying incomplete for many years in a junk shop this example was finished by VMW in 2001.



Another Wavemaster

Another Wavemaster revovated by VMW in 1998 powered by Robbe 700 motor (water-cooled) with power from NmH battery. The model is used for charity promotion.



The "Wavemaster" model cabin cruiser. Built from a kit manufactured by Hammersmith Model Makers, Ltd., it has a beam of 11in., a freeboard of 4in., and a length of 34in., and may easily be built "on the kitchen table"—an ideal model for the beginner, and one which provides ample room for the radio control equipment and driving mechanism.

Wavemaster

Photograph taken in 1953 of the Wavemaster with the original description emphasising its suitability for radio control.

John Oliver of Oliver Tiger engine fame pictured in the 1950s with his Wavemaster powered by an Oliver Tiger Major 3.5cc marine diesel engine.



Tiger power



The Wavemaster was originally produced by Hammersmith Model Makers and designed by L J Rowell in 1953. In later years it was produced and marketed by Yeoman Kits owned by A A Hales Ltd. This advertsiement is from circa. 1960.

"Wavemaster"

Length 34in. Beam 11-in. Freeboard 4in.

For those who desire the best designed for use in rough seas, and fishermen would make good investments.

SALES BY CONTRACT

These boats are built to order and are delivered in 10 days. They are built to order and are delivered in 10 days. They are built to order and are delivered in 10 days.



"Fisherman"

Length 22-in. Beam 10-in. Freeboard 4-in.

For those who desire the best designed for use in rough seas, and fishermen would make good investments.

SALES BY CONTRACT

These boats are built to order and are delivered in 10 days. They are built to order and are delivered in 10 days. They are built to order and are delivered in 10 days.



"Spraymaster"

Length 34-in. Beam 11-in. Freeboard 4-in.

For those who desire the best designed for use in rough seas, and fishermen would make good investments.

SALES BY CONTRACT

These boats are built to order and are delivered in 10 days. They are built to order and are delivered in 10 days. They are built to order and are delivered in 10 days.

YELMAN SHIP FITTINGS

Wholesale and Retail

1000 N. 1st St. New York, N.Y.

Phone 1000



For those who desire the best designed for use in rough seas, and fishermen would make good investments.

SALES BY CONTRACT

These boats are built to order and are delivered in 10 days. They are built to order and are delivered in 10 days. They are built to order and are delivered in 10 days.



For those who desire the best designed for use in rough seas, and fishermen would make good investments.

SALES BY CONTRACT

These boats are built to order and are delivered in 10 days. They are built to order and are delivered in 10 days. They are built to order and are delivered in 10 days.

YELMAN SHIP FITTINGS

Wholesale and Retail

1000 N. 1st St. New York, N.Y.

Phone 1000



For those who desire the best designed for use in rough seas, and fishermen would make good investments.

SALES BY CONTRACT

These boats are built to order and are delivered in 10 days. They are built to order and are delivered in 10 days. They are built to order and are delivered in 10 days.



For those who desire the best designed for use in rough seas, and fishermen would make good investments.

SALES BY CONTRACT

These boats are built to order and are delivered in 10 days. They are built to order and are delivered in 10 days. They are built to order and are delivered in 10 days.

YELMAN SHIP FITTINGS

Wholesale and Retail

1000 N. 1st St. New York, N.Y.

Phone 1000



For those who desire the best designed for use in rough seas, and fishermen would make good investments.

SALES BY CONTRACT

These boats are built to order and are delivered in 10 days. They are built to order and are delivered in 10 days. They are built to order and are delivered in 10 days.



For those who desire the best designed for use in rough seas, and fishermen would make good investments.

SALES BY CONTRACT

These boats are built to order and are delivered in 10 days. They are built to order and are delivered in 10 days. They are built to order and are delivered in 10 days.

YELMAN SHIP FITTINGS

Wholesale and Retail

1000 N. 1st St. New York, N.Y.

Phone 1000

Advertisement

The late Vic Smeed's Moonglow, renovated by VMW modellers in 1999. Robbe 700 motor (water-cooled) powered by a 12v gell cell battery.



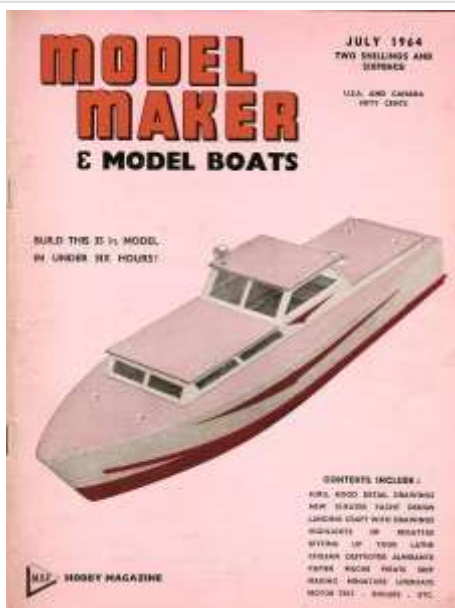
Moonglow



The model first appeared in Model Maker magazine in July 1964 and was intended to be a simple "fast build model" for radio-controlled



Moonglow



Front cover of Model Maker magazine featuring the Moonglow in 1964

steering competitions. Building time was an ambitious under 6 hours!

The original Moonglow was powered by an ED Sea Otter diesel.



Original publication from Model Maker



The
late
Vic
Smeed

probably the most prolific designer of boats and aircraft in the World. Also editor of Model Maker and Model Boats and author of many books on modelling.



Maycraft Mercury

MAYCRAFT
Mercury

This example of the Maycraft Mercury was completed and renovated by VMW modellers in 2005. Length 40", Motor MFA Torpedo 850 (water-cooled), Speed controller Electronize 35 amp, battery 12v 2.3 amp gell cell. Finished in International Marine Ivory and blue Enamel.

Maycraft produced high quality kits in the 1950s and 1960s. Cutting and materials were excellent for the period and were indeed deluxe models at that time. They were distributed by Keil-Kraft. Only a few designs were produced.

— THE MAYCRAFT MERCURY Centre Wheelhouse Cabin Cruiser

ALL PARTS MACHINED TO ENGINEERING LIMITS

Designed for 2.5 c.c. to 5 c.c. Diesel, Petrol or Electric propulsion and Radio Control.

Specification:—
All Plywood used is water resistant to Board of Trade specification.
Planked with 1/8" plywood.
Keel of 1/2" plywood.
Hog Pieces and Afters of 1/2" x 1/2" mahogany or hardwood.
2 Working Sliding Doors to Wheelhouse.
6 Bright Nickel-Plated Metal Hand Rails.
16 Bright Nickel-Plated Metal Hand Rail Knobs.
24 Bright Nickel-Plated Metal Framed Glazed Windows.
1" Stopwater above deck level ensures a perfectly dry interior. Completely removable Superstructure, giving maximum accessibility to all interior mechanism.
Construction is very simple and very quick. Only a minimum of work is needed to put the Mercury together and only rudimentary tools are required. A very detailed 16-page instruction book covers each step.



LENGTH 40 in.
BEAM 11 in.

PRICE
£6. 12. 6.

All parts are interchangeable.

Advertisement



High Speed Patrol Launch



Frog Kit – Described as a high speed patrol launch this example was renovated by VMW modellers in 1999 and converted to electric power using Robbe 700 motor which is extremely fast using NmH batteries.

The original kit was produced in 1964 for FROG and powered by a 3.49cc diesel.

34" HIGH SPEED PATROL LAUNCH



LENGTH 34 in.

Suitable for Radio Control

FULLY PREFABRICATED and COMPLETE.
Hundreds of parts

Handy model to the "3400" Diesel and other motors between 1 1/2 c.c. or electric propul.

A really interesting and complete kit which includes all wood parts ready-cut to shape, pre-painted, stainless steel propellers, brass bearings, rudders and outboard, exhaust water-cooling and fittings with expansion tubing and full set of instruments, compass, painted deck fittings, petrol pump and all hardware accessories.

Advertisement

Catalogue photo of advertisement for the 34" FROG RAF Launch – probably a semi-scale model from 1964.



The model planing

The model was probably based on an RAF range safety launch.



Model approaching at speed



Sea Queen



The 46" Sea Queen was introduced by Aerokits in the early 1950s. Based on a Norfolk Broads cruiser it was designed by the late Leslie J Rowell owner of Aerokits which later became Lesro Models. This example was originally i/c powered but was renovated and converted to electric power by VMW modellers in 2007. The colours are ivory and blue International Marine enamel.

VMW use Sea Queens for Charity promotions. This model is over 40 years old and is seen entertaining the public near Swanage pier, Dorset in 2006.



Model Advertising

Another picture of the diminutive Sea Queen with a beautiful backdrop at Swanage.



Sea Queen

Powered by an MFA 850 motor with water-cooling coil, Electronize 30 amp speed controller and power from a 12v 7amp gell cell battery. The model performs with more than adequate speed. The model is finished in high gloss International Marine enamel and varnish.



Sea Queen at Alfold, Surrey



Fairey Huntsman 31

PRECEDENT

This example is a Precedent kit – length 46 1/2 inches, two versions of this size are kitted both in fibreglass or wood. This model is wood with extra detail added by the builder.



Fairey Huntsman static view

Photograph of model used for advertising purposes.



Veron Huntsman 42"



The Veron Huntsman/Swordsman is an open cockpit version length 42" kitted by Veron Model Aircraft at Southbourne, Dorset and designed by the late Phil Smith. Restored by VMW modellers in 1999 powered by MERCO 61 glowplug motor.

HUNTSMAN 42" HIGH SPEED CRUISER
FAIREY MARINE

All hardwood construction with interlocking pre-slotted frames and keel.

for 3-5 to 10 c.c. Diesels and 12 volt Electric Motors

PRICE £7'10'6

The "HUNTSMAN" is a scale model of the Fairey Marine 26' racing cruiser with the hull design by Ray Hunt and which was so successful in the "DAILY EXPRESS" Offshore power boat races. Keel of hardwood is ready shaped ; with ready drilled stem tube location. Pre-shaped cabins and windows. Designed with ample room for either Single or Multi-Channel radio control installations.

Original Veron advert

Considered to be the E-type of motorboats in the 1960s, this photo shows one of the many celebrity owners, Billy Butlin racing his open cockpit Huntsman at the *Daily Express* power boat race in 1961.



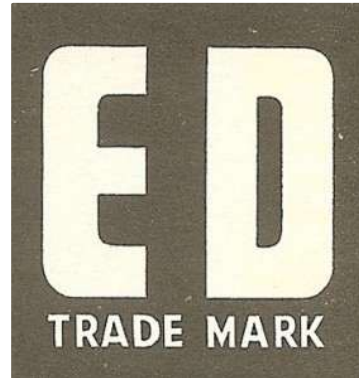
The full-size boat



Miss Eedee

THE ED CROSS CHANNEL BOAT

The
photograph
shows the Miss



Eedee boat on test on the River Thames at
Richmond in 1951 with George Honnest-Redlich
and director of electronic developments, J E
Ballard. The model visited the Festival of Britain

site at the South Bank under its own power and later in the year crossed the Channel from Dover to
Calais in 9 hours. Named Miss Eedee the model was 5 feet long with a 2 feet beam powered by a
4.5cc diesel engine designed by Basil Miles.



Miss Eedee at Calais





1951 Advertisement in the model press



Veronica Yacht



An example of the Veron Veronica yacht restored by VMW modellers in 1997, length 27", beam 6 1/2".



The Master with his design

Introduced in the late 1950s to the Veron range by designer Phil Smith. This photograph shows him examining the prototype Veronica with the restored model at Poole in 2007.



Veronica yacht prototype

A photograph of the late Phil Smith with the original prototype model in Poole 2007.



Original catalogue advert for the model

The kit was complete including the cotton sails.



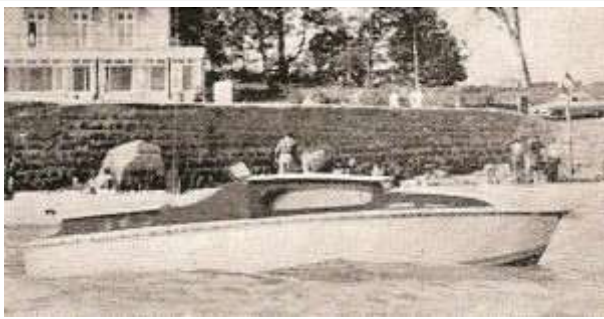
Sea Commander



The Sea Commander was introduced by Aerokits at Gorleston Norfolk in the early 1950s. Designed by L J Rowell the Sea Commander is a smaller version of the Sea Queen. The length is 34 1/4 inches by 10 3/4 inches and is almost identical except there is no mast. Intended for the ED Marine Racer and Hunter power plants or electric motors. This example was found at a boot sale and restored by VMW modellers in 2000, it is powered by a

Robbe 700/13 turbo electric motor.

This photograph of a Sea Commander that had attempted to cross The Solent is shown at Ryde, Isle of Wight, where it had successfully completed half the crossing in 1963 before the weather had forced the attempt to be abandoned. It was powered by a Taplin Twin marine diesel engine which was somewhat over-powered for the size of the model.



Solent Sea Commander



Sea Commander

An original Aerokits advert from the KeilKraft Marine Models catalogue showing the range of fittings available from Mersey Marine.



Sea Hornet



Another popular design from the 1950s Aerokits range. A fast small boat (length 25 1/4 inches by 8 inch beam) when fitted with a suitable motor. This modified example was restored by VMW modellers in 1999.

An original advert for the Sea Hornet from the KeilKraft Marine catalogue also showing fittings available at the time.



Sea Hornet

An original Aerokits 34" Crash Tender renovated by VMW modellers in 1999, powered by a Graupner 700 motor with an Electronize 35 amp speed controller.



34 inch Crash Tender

CONTACT

268 Cannon Hill Lane
Raynes Park
London SW20 9HN

Tel. 020 8542 3100

Email. vintagemodelworks@hotmail.co.uk

Mystique theme by [digitalnature](http://digitalnature.com) | Powered by [WordPress](http://WordPress.com)

[RSS FEEDS](#) [XHTML 1.1](#) [TOP](#)